


Expandable Plug-&-Play Telematics Device

For the most up-to-date version of this document, please visit: goo.gl/rkLRiA.

The telematics device is a small form-factor device. Device installation is often straightforward and can be completed successfully by following these instructions. Harnesses are available for specialty installations or to keep the diagnostic port exposed if desired (professional installation required). 

Read important related safety information and limitations of use following these installation instructions. Read and follow all instructions and warnings to prevent serious injury and/or vehicle damage.

Installing Your Telematics Device

Preparing For Installation

Before installing your device, please document your device serial number. You will need this information at a later time to verify your installation.

1. Verify that we support your vehicle by carefully reading the device release notes at goo.gl/fZURff or from the vehicle specific installation notes at goo.gl/MCIXt0. If you have any questions or concerns please consult your Authorized Reseller.
2. Ensure no dash warning lights are on in the vehicle while it is running, and all other functions such as headlamps and flashers etc. are working prior to installing the device.

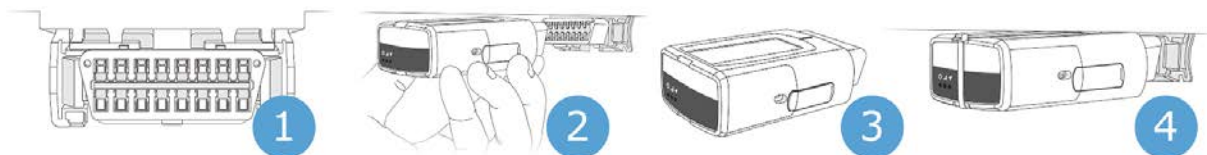
WARNING! Some installations are not straightforward and must be completed by an Authorized Installer to ensure a secure installation. An unsecure device installation can cause poor electric and/or data connection that can lead to short circuits and fires or cause malfunctions of vehicle controls that can result in serious personal injury or significant damage to your vehicle. Some examples requiring professional installation from an Authorized Installer are:

- The OBD port location is such that the device could protrude or interfere when entering or exiting the vehicle or located so could be inadvertently kicked or bumped during vehicle operation.
- The device isn't fully secured and so may be able to vibrate loose or get kicked or knocked.
- An electrical harness or additional wiring is required.
- Vehicle mounting modifications are required to secure the device i.e. removing of panels, or the OBD connector has been deformed/damaged or there is any physical damage visible to the electrical wiring.
- The device does not beep six times and power on when first installed.
- The installer questions their ability to complete a secure installation according to these instructions.

WARNING! Do not attempt to install, re-configure or remove any product from a vehicle while the vehicle is in motion or otherwise in operation. All installation, configuration or removal must be done only in stationary vehicles which are securely parked. Attempting to service devices while the vehicle is in motion could result in malfunctions or accidents, leading to death or serious personal injury.

Installation in Four Steps

Based on the warnings above, if you determine that a professional installation by an Authorized Installer is not required, the following basic installation steps can be followed.



Locate the vehicle's engine diagnostic port typically found in the driver's area at or below knee level. Note: heavy duty vehicles use a different connector system. Contact your Authorized Reseller for heavy duty connector applications or for extension harnesses should it be necessary to place your device away from the engine diagnostic port location.

Align the receiver end of the device with the engine diagnostic port and simply push in place, ensuring that the device is well connected to the diagnostic port. You will hear 6 quick beeps and all three lights on the device will flash briefly.

With the vehicle parked outdoors to locate satellites and vent exhaust fumes, start the vehicle and allow it to run for approximately 3 minutes. During this time period you will notice the Red LED will power on and illuminate on the face of the device. Shortly afterwards the Green and Blue LEDs will illuminate when the device connects with the cellular and GPS networks. This initial startup may take several minutes to complete.

Once all three LED lights have come on, secure your device using the supplied cable tie.

WARNING! All in-vehicle devices and related cabling must be securely fastened and kept clear of all vehicle controls, including gas, brake and clutch pedals. This requires the use of a cable tie when securing the device or any extension harness to the OBD connector, securing both sides of the harness. If you do not use a cable tie, vibration in the vehicle can lead to a loose connection which could indirectly cause the vehicle's engine computer to fail, loss of vehicle control and cause serious injury. Inspect devices and cabling regularly to ensure all devices and cabling continue to be securely attached.

WARNING! If at any point after an in-vehicle device is installed a warning light illuminates on the vehicle dash or the vehicle stalls or has a marked drop in performance, shut off the engine, remove the device, and contact your reseller. Continuing to operate a vehicle with these symptoms can cause loss of vehicle control, and serious injury.

Verify Your Installation

To check the status of the device you have installed, navigate to installmygps.com. On the web page, fill in your Name, the Company Name, and the Device Serial Number, which can be found on the bottom of the device. Once complete, click **Log Install**.

You will now see a screen with green text to indicate that your installation was successfully completed. If you see red text instead, you must check the installation.



For more details on compliance information please contact your Authorized Reseller.

Important Safety Information and Limitations of Use

For the latest version of Limitations of Use, please visit: goo.gl/k6Fp0w.

WARNING! Your in-vehicle devices must be kept clear of debris, water and other environmental contaminants. Failure to do so may result in units malfunctioning or short-circuiting, that can lead to a fire hazard and cause loss or serious injury.

WARNING! Do not attempt to remove the devices from the vehicle in which they are originally installed for installation in another vehicle. Not all vehicles share compatibility, and doing so may result in unexpected interactions with your vehicle, including sudden loss of power or shutdown of the vehicle's engine while in operation or cause your vehicle to operate poorly or erratically and cause serious injury and/or vehicle damage.

NOTICE: This product does not contain any user-serviceable parts. Configuration, servicing, and repairs must only be made by an authorized reseller or installer. Unauthorized servicing of these products will void your product warranty.